

Zhejiang University

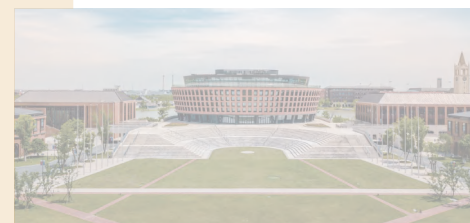
Zhejiang University (ZJU) is one of China's top higher education institutions, as well as one of its oldest; its roots can be traced back to 1897 and the founding of the Qiushi Academy.

Located in Hangzhou – one of China's most picturesque cities – the University is organized across seven faculties and 37 schools. It is home to 4,191 full-time faculty members, including 52 members of the Chinese Academy of Sciences and the Chinese Academy of Engineering. ZJU has 60,739 full-time students, over 56% of whom are postgraduate students.

3
National Ranking 2023

6
Asia University Ranking 2023

42
QS World University Ranking 2023



ZHEJIANG UNIVERSITY INTERNATIONAL BUSINESS SCHOOL (ZIBS)

Based in China with global ambition, **ZIBS** aims to build a science & technology-focused premier global business school from China, by upholding the 5“i” philosophy of being “international, interdisciplinary, innovative, inclusive and integrative”, with continued emphases on 3 strategic pillars - Globalization, Digitalization, and the ZIBS Ecosystem.

ZIBS offers six postgraduate programs, namely Master of China Studies (MCS), Master in Communication and Management (MCM), international Master of Business Administration (iMBA), international Master of Finance (iMF), international Master of Fine Arts (iMFA) and international Master of Data Science (iMDS), one undergraduate program in Global Communication and Management (GCM) for international students, as well as executive education programs and customized training programs.

Connecting the World · Shaping the Future
改变世界 引领未来

PROGRAM OVERVIEW

international Master of Data Science (iMDS)

The iMDS program under the guidance of Center for Data Science, Zhejiang University (CDS) equips students with theory and practical skills in Big Data, focusing on technological innovation in big data collection, clarity, storage, mining, analysis and visualization algorithms. Mentors of this program graduated from world-class universities like University of Pennsylvania and National University of Singapore.

CENTER FOR DATA SCIENCE (CDS)

Cultivation by Professionals

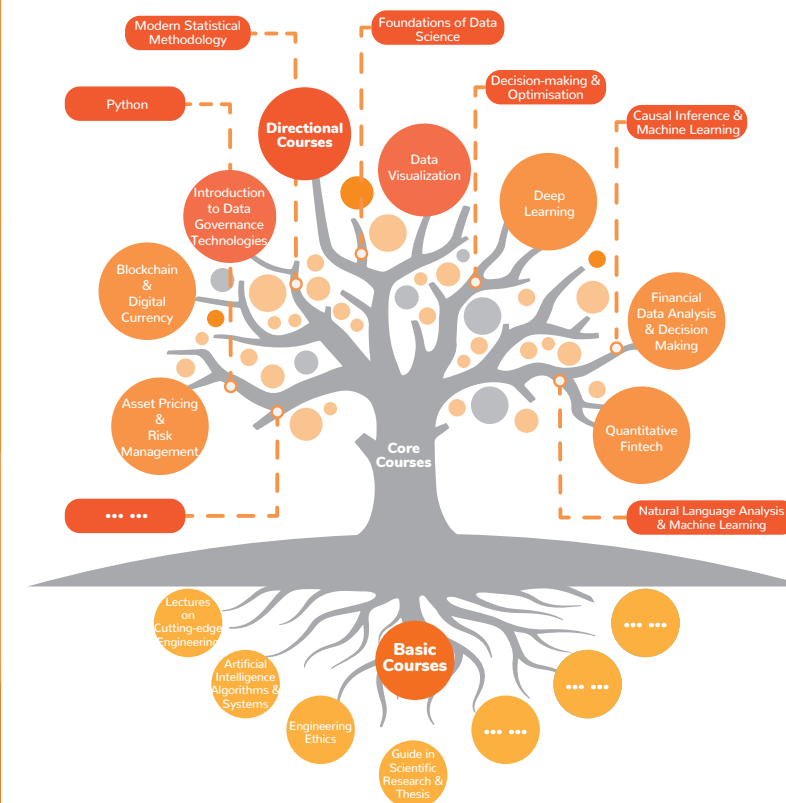
Set up in May 18, 2017, CDS is a university-level academic institution with applied mathematics in statistics, computer science and management as its core disciplines, focusing on big data theory, application and talent training.

ZHEJIANG UNIVERSITY INTERNATIONAL BUSINESS SCHOOL (ZIBS)

Operation and Student Management

ZIBS implements a multi-institutional, multi-disciplinary and multi-level partnership strategy with Zhejiang University as the core, focusing on business research and talent training in the fields of new finance, new retail, new technology, new industries and new markets.

CURRICULUM



- ▶ ... More courses will be added
- ▶ Courses indicated above may subject to change

international Master of
Data Science

数据科学与工程专业硕士项目

PROGRAM HIGHLIGHTS

Dual-mentor

1. Close connection between course learning and practical courses
2. Dual-mentor system (professional mentors and fieldwork mentors)
3. Strong interdisciplinary integration

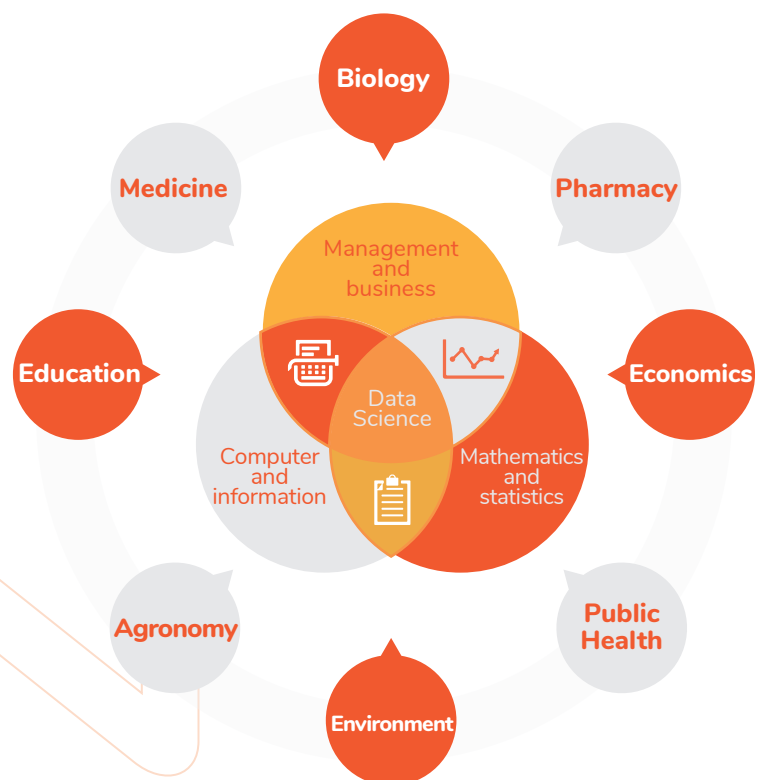
Project-oriented

To meet the major strategic needs of the country, deepen the integration of industry and education, we are cultivating talents in big data who can solve major engineering problems

Internationalisation

1. Drawing on the training standards of top international universities, the training programme and curriculum are designed to align the teaching content and format with those of top international universities
2. International teaching environment with the background of International Campus, Haining City
3. The mentor team has a broad base of cooperation with famous universities, providing excellent opportunities for outstanding students to go abroad for exchange

PROGRAM STRUCTURE



45% Course related to Statistics

35% Course related to Computer, Big Data

20% Course related to Management

APPLICATION

Requirements

• Applicants must be non-Chinese
Minimum bachelor's degree

• Applicants with relevant STEM background are strongly encouraged to apply (e.g. Applied Mathematics, Operations Research, Statistics, Industrial Engineering, Computer Science, Data Science and etc.).

• Applicants must have an internet-based TOEFL test score 80 (or above) or IELTS test score 6.5 (or above) or other proof which can reflect the applicants' English proficiency (except for English native speakers, or those who obtained their bachelors' degree in English-taught programs)

FEES

APPLICATION FEE >

800 RMB (Non-refundable)

TUITION >

36,800 RMB/Academic year

ACCOMMODATION >

8,000-10,000 RMB/Academic year

INSURANCE >

800 RMB/Year

* Tuition fee is subject to change according to the latest regulation

Timeline

- 1 November, 2023 – March, 2024
Application
- 2 December 2023 – April 2024
Screening Stage
- 3 December 2023 – May 2024
Interview Stage
- 4 July, 2024
Official Admission Notice
- 5 September, 2024
Enrollment

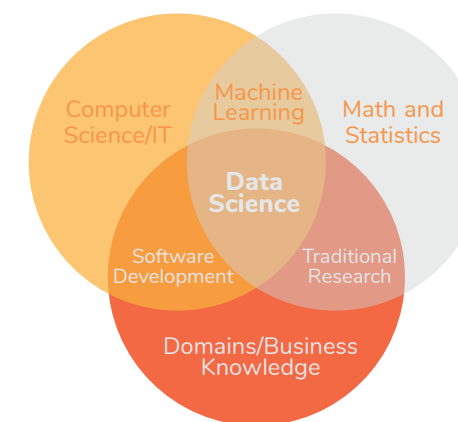
Application Submission:
via application system
(<http://isinfosys.zju.edu.cn/recruit/login.shtml>)

COMMUNICATION

 International Academic Activities

 Exchange

 Study Abroad



CAREER

 Big Data Analyst (R&D category)

 Data Scientist (Application)

 Big Data Engineer (Analytics)

international
interdisciplinary
integrative
inclusive
innovative

CONTACT

Telephone: +86 (0571) 87572639

Email: zibs-imds@intl.zju.edu.cn
zibsadmission@intl.zju.edu.cn

Website: <https://zibs.zju.edu.cn/eng>

