



ZIBS-RMIT Study Tour Program

Daily Schedule

DAY 1	
Saturday, July 27, 2024	
Morning Time	Airport pick up and Hotel Check-in
DAY 2	
Sunday, July 28, 2024	
09:00-10:30	Program Orientation
10:30-12:00	Campus Tour
12:00-13:00	Lunch
13:30-17:00	Joint Class EMBA “Marketing”
18:00-21:00	Welcome Dinner
DAY 3	
Monday, July 29, 2024	
09:00-12:00	Joint Class MBA “Design Thinking”
12:00-13:00	Lunch
14:00-17:00	Visit Parliament of Victoria & MCG
18:00-21:00	Dinner with RMIT students and staff
DAY 4	
Tuesday, July 30, 2024	
09:00-12:00	Company Visit: Capgemini SE (Global Tech)
12:00-13:00	Lunch
14:00-17:00	Industry Panel Event (Plenary Session)
17:00-21:00	Free Time
DAY 5	
Wednesday, July 31, 2024	
08:30-10:00	On the way to Twelve Apostles
10:00-16:30	Cultural Visit
16:30-19:00	On the way back and Dinner
19:00-21:00	Watch a Performance/ Show
DAY 6	
Thursday, August 1, 2024	
09:00-12:00	Company Visit: Medibank (medical insurance)
12:00-13:00	Lunch at Vineyard
13:00-17:00	Vineyard Visit and Wine Tasting
18:00-21:00	Farewell Dinner

DAY 7	
Friday, August 2, 2024	
09:00-12:00	Program Debriefing
12:00-21:00	Free Time
DAY 8	
Saturday, August 3, 2024	
	Airport Departure

*备注：访学最终行程安排请以后期通知为准，具体行程根据实际情况会有变动和调整。The final itinerary and registration method for the study tour will be subject to later notice.

Company and Cultural Visit

1. Parliament House



The Melbourne Parliament House, an iconic building located at the intersection of Spring and Bourke Streets, serves as the home of the Parliament of Victoria. Its construction began in 1855, showcasing a neoclassical architectural style with grand colonnades and a stately facade. The building's interior features opulent decorations, including intricate gold leaf, chandeliers, and ornate plasterwork. Parliament House remains a central landmark in Melbourne, reflecting the city's historical and political heritage while also being an active site for legislative activities and public tours.

2. Medibank



Medibank is a prominent health company in Australia, dedicated to creating Better Health for Better Lives by delivering exceptional health and wellbeing experiences. With a 47-year

history as one of the country's leading health insurers, Medibank, alongside its ahm brand, supports millions of Australians in managing their health through personalized products and services. The company invests in preventative health and innovative healthcare solutions to offer greater choice, better access, and more control over care. During an on-site visit, MBA students will engage with Medibank's business leaders to gain insights into its operations, proactive stance on Environmental, Social, and Governance (ESG) issues, and strategies for adapting to the evolving Future of Work landscape. This interaction promises valuable understanding of Medibank's forward-thinking approach and commitment to enhancing health services through its Amplar Health business.

3. Capgemini



Capgemini SE is a French multinational IT services and consulting company headquartered in Paris, France. With over 50 years of experience, Capgemini partners with companies worldwide to transform and manage their businesses by unlocking the value of technology. As a leading strategic partner, it addresses the entire spectrum of business needs, from strategy and design to operations management. Capgemini leverages its deep industry expertise and mastery of rapidly evolving fields such as cloud computing, data, artificial intelligence, connectivity, software, digital engineering, and platforms to drive business transformation and innovation for its clients.

4. Carlei Estate and Carlei Green Vineyard



Vineyards is an award winning organic and biodynamic winery by Sergio Carlei. Cellar Door & Pizzeria, overlooking rolling hills, offering traditional Italian pizzas.

5. MCG (Melbourne Cricket Ground)



The Melbourne Cricket Ground (MCG), affectionately known as "The G," is one of Australia's most iconic sports venues, located in Yarra Park, Melbourne. Established in 1853, it boasts a rich history and a seating capacity of over 100,000, making it the largest stadium in the Southern Hemisphere. The MCG is renowned for hosting premier sporting events, including international cricket matches, Australian Football League (AFL) games, and the 1956 Olympic Games. Its significance extends beyond sports, serving as a cultural landmark and a testament to Melbourne's passion for sports and large-scale events.

6. The Twelve Apostles



Venture out on a scenic drive along the Great Ocean Road to witness the breathtaking beauty of the Twelve Apostles. These majestic limestone stacks rise dramatically from the Southern Ocean, creating one of Australia's most iconic natural landmarks. Enjoy panoramic views from the clifftop boardwalks, take a helicopter tour for a unique perspective, or explore nearby attractions such as Loch Ard Gorge and the Gibson Steps. The Twelve Apostles offer a stunning coastal experience that showcases the rugged beauty of Victoria's coastline.

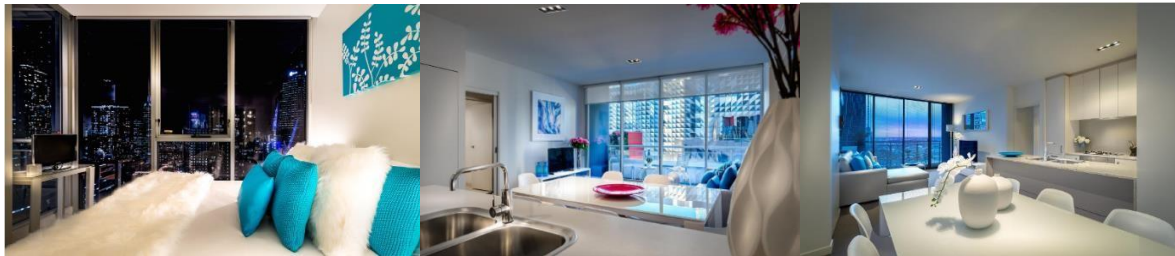
Accommodation



Milano Serviced Apartment (8 Franklin Street, Melbourne, Victoria 3000, Australia)

- 1 Bedroom Apartment that could share up to 2 guest either 1 king or 2 singles for \$135 per night
- 2 Bedroom 1 Bathroom Executive Apartment that could share up to 4 guests either 1 king and 2 singles or 2 kings for \$193 per night
- 3 Bedroom and 2 Bathroom Apartment that could share up to 4 guests either 1 king and 2 singles or 2 kings for \$220 per night

Unlimited Premium Wi Fi and complimentary use of the indoor heated pool, spa, sauna, gymnasium, BBQ facilities, tennis court, club lounge/meeting room and private cinema room.



University Background



RMIT University, officially known as the Royal Melbourne Institute of Technology, is a public research university located in Melbourne, Australia. Founded in 1887 by Francis Ormond, RMIT initially operated as a night school, offering classes in art, science, and technology in response to the industrial revolution in Australia. It has since evolved into a global institution, specializing in technology, design, and enterprise. With campuses in Australia, Vietnam, and Spain, RMIT provides a diverse range of undergraduate, postgraduate, and vocational courses, emphasizing hands-on experience and industry connections.

Melbourne City



Melbourne, renowned as the cultural capital of Australia, stands as a vibrant and dynamic city that embodies a unique blend of history, creativity, and modernity. With its diverse population, thriving arts scene, and culinary delights, Melbourne offers an unparalleled quality of life. The city's renowned livability is underscored by its consistent ranking as one of the world's most livable cities, a testament to its excellent healthcare, education, infrastructure, and stability. Melbourne's green spaces, iconic laneways, and bustling cultural events contribute to its charm and appeal. As a global hub for innovation and sustainability, Melbourne continues to attract residents and visitors alike, fostering a rich tapestry of experiences and opportunities.

Other information as your reference



1. Explore the Laneways: Melbourne's laneways are a labyrinth of hidden gems waiting to be discovered. Wander through these narrow alleys adorned with vibrant street art, boutique shops, cozy cafes, and tucked-away bars. Each laneway has its own character and surprises, making it perfect for a leisurely stroll or a guided tour to uncover the city's urban art scene.



2. Indulge in Food and Wine: Melbourne is a gastronomic delight, boasting a diverse culinary scene that reflects its multicultural population. From award-winning restaurants to bustling food markets, there's something to satisfy every palate.

Explore the historic Queen Victoria Market for fresh produce and gourmet treats, or embark on a food tour to sample the city's multicultural flavors. Pair your culinary adventures with a visit to one of the nearby wineries in the renowned Yarra Valley for a complete epicurean experience.



3. Royal Botanic Gardens: Escape the hustle and bustle of the city and immerse yourself in the tranquility of the Royal Botanic Gardens. Spanning over 94 acres, these lush gardens offer a serene oasis in the heart of Melbourne. Take a leisurely stroll along winding pathways, marvel at the diverse plant collections from around the world, and relax by picturesque lakes and ornamental ponds. Don't miss the opportunity to visit the stunning Guilfoyle's Volcano, an iconic reservoir garden featuring cascading waterfalls and panoramic views of the city skyline.



4. National Gallery of Victoria (NGV): Delve into the vibrant arts scene of Melbourne by visiting the National Gallery of Victoria, the oldest and most visited art museum in Australia. With an extensive collection spanning ancient to contemporary art, the NGV showcases works from renowned Australian and international artists. Explore the gallery's diverse exhibitions, including Indigenous art, Asian art, European masters, and modern installations. Be sure to check out the iconic stained-glass ceiling in the Great Hall and take advantage of the gallery's regular events, talks, and guided tours for a deeper appreciation of art and culture.

常见问题 FAQ

谁可以申请? Who can apply? ZIBS 在读学生及历届校友

Current ZIBS students and alumni.

项目组织方是谁? Who is organizing the program?

该项目由 ZIBS iMBA 中心和皇家墨尔本理工大学共同设计组织

The program is jointly organized by the ZIBS iMBA Center and RMIT University.

项目时间? When is the program?

2024 年 7 月 27 日至 8 月 3 日，其中 7 月 28 日至 8 月 2 日为课程时间。

From July 27 to August 3, 2024, with course sessions from July 28 to August 2.

项目费用? What is the cost of the program?

11000 元人民币，费用包含了在澳期间的学术活动、公司参访、住宿、每日商务午餐、RMIT 欢迎晚宴、欢送晚宴、晚宴日程以外部分商务晚餐、在澳期间参与集体研学活动产生的交通费用、境外保险、工作人员服务费用等。

以上费用不包含：个人往返澳洲机票、澳洲签证费、因个人原因引起的境外消费等费用包含项中所有未提及的费用（如个人单点酒水饮料等）。

The program fee is 11,000 RMB, which includes academic activities, company visits, accommodation, business lunch and dinner, local transportation, overseas insurance, and staff service fees. The following costs are not included: personal round-trip airfare to Australia, visa fee, personal overseas expenses, and any costs not mentioned in the included items (such as personal drinks).

项目将在哪里进行? Where will the program take place?

该项目在墨尔本进行，您将造访皇家墨尔本理工大学、当地企业和墨尔本当地及国家级别的文化、社会、经济和政治重要机构。

The program will take place in Melbourne. You will visit RMIT University, local companies, and significant cultural, social, economic, and political institutions at both the local and national levels in Melbourne.

需要申请的签证类型? What type of visa is required? 短期留学签证 subclass

600，签证费为 192.66 澳元，RMIT 将出具签证邀请函。

A short-term study visa subclass 600, with a visa fee of 192.66 AUD. RMIT will issue a visa invitation letter.